

Kit per montaggio pannelli a 15° bloccaggio frontale

IT Fatto per bloccare i pannelli fotovoltaici spessore: 30mm fino a 40mm larghezza 900 fino a 1250mm.
 Angolo di inclinazione pannello 15° regolabili, con bloccaggio frontale.

Materiali:

Staffa, colonnette e dadi scorrevoli: Alluminio EN AW- 6063 T66.

Molle intermedie: Acciaio inossidabile.

Viti: M8 con zigrinatura sotto testa per garantire il bloccaggio nel tempo in acciaio inossidabile A2 – 70.

EN It is made to fasten photovoltaic panels with a thickness from 30mm to 40mm and width or 900 to 1250mm.

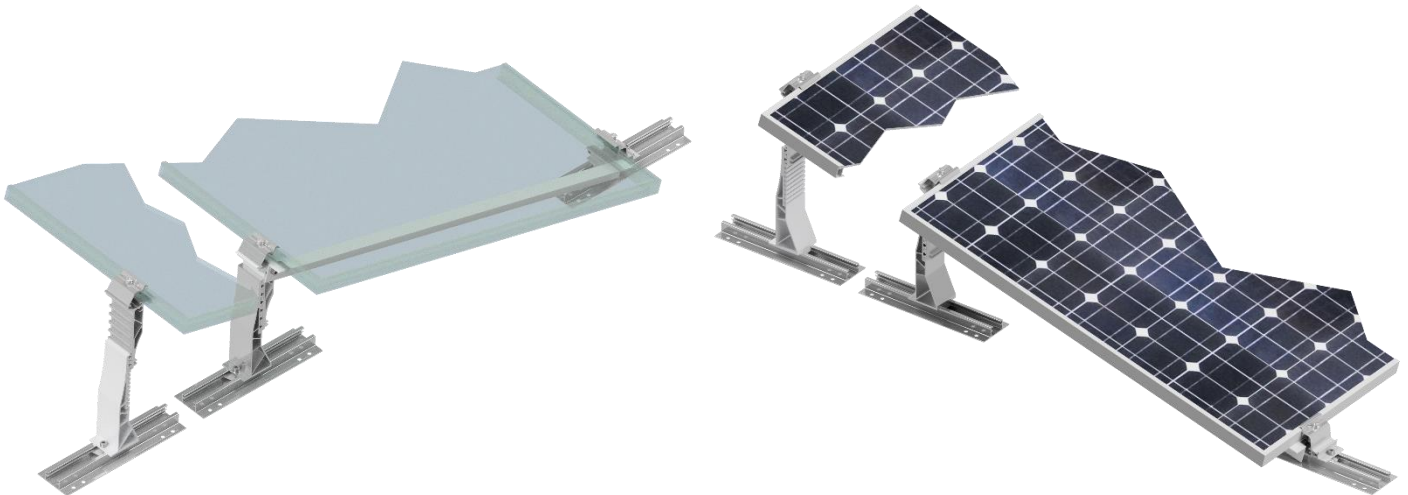
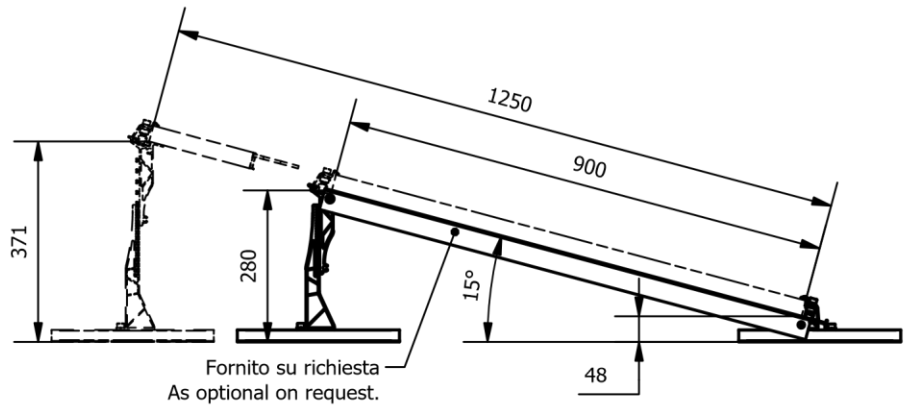
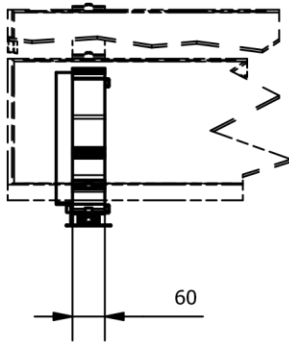
Photovoltaic slope angle 15° adjustable and frontal fastening.

Materials:

Stirrup, pillars and sliding nuts are made in: Aluminium EN AW.6063 T66

Middle springs: Stainless steel.

Screws: In stainless steel A2-70 -M8 with knurling under the head to guarantee a perfect lock along the time.



Material :		General Tolerances		
		Aluminum Extruded: EN 755-9	Machined parts: UNI EN-ISO 22768-mK	
		Description: Studio fissaggio con dadi incastrati adattabile a pannelli W=1002 fino a W=1200		
		Date: 08/02/2024	Designer: Marco C.	Drw.: MM_SFSPF00102
Roughness:		Weight : N/A		Rev.: 00
Drawing of ownership of the AR SSolar company according ti the law, the reproduction or disclosure of the same without aithorisation is prohibited				